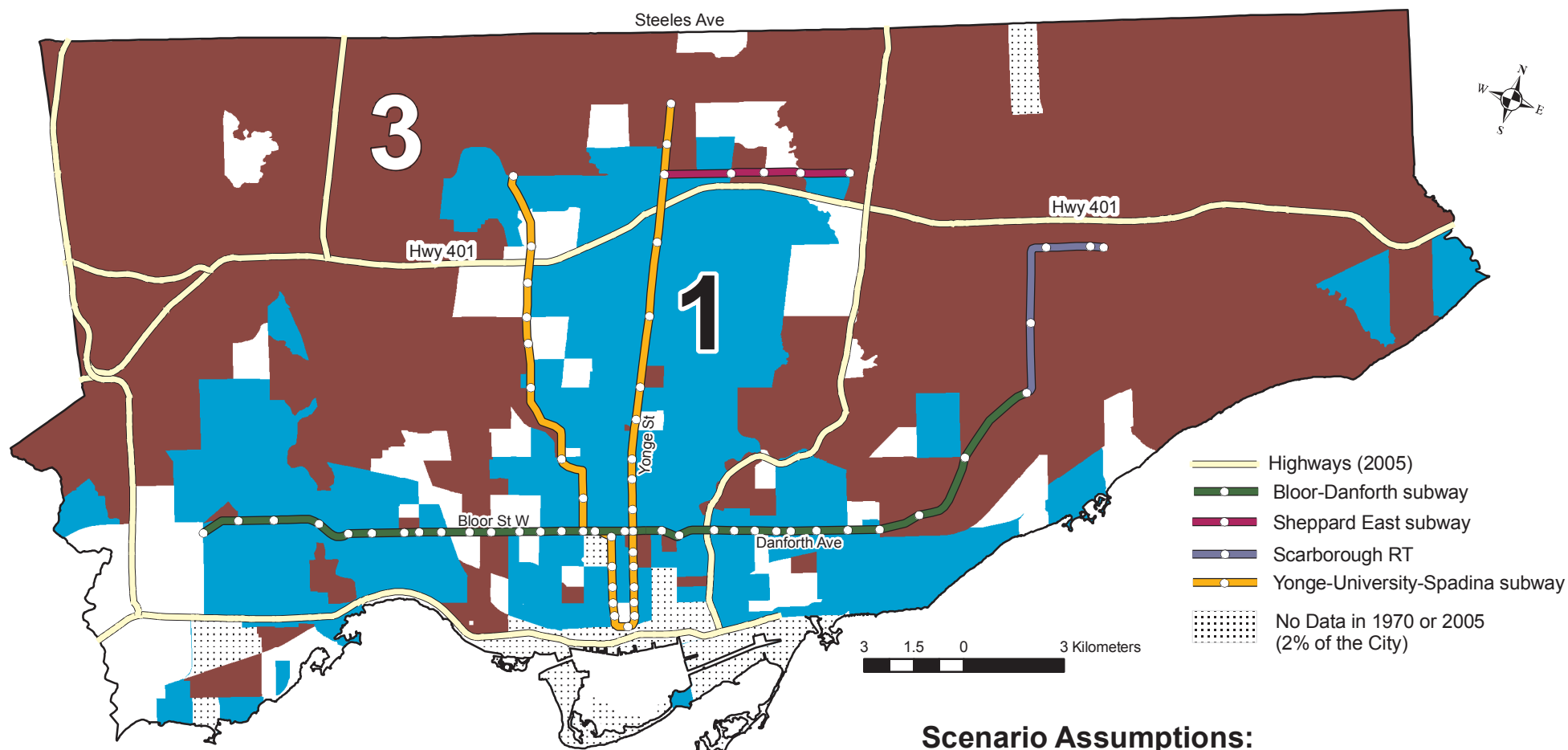


# Projection of the "Three Cities" in Toronto to 2025

Based on the 1970 to 2005 Trends in Census Tract Individual Income, Assuming No Change in Trends



## Projected Change in the Census Tract Average Individual Income as a percentage of the Toronto CMA Average, 1970-2025

- City #1 - Increase of 20% or more: 156 census tracts, 30% of the city (2005 actual: 100 census tracts, 19% of the city)
- City #2 - Increase or Decrease is Less than 20%: 50 census tracts, 9% of the city (2005 actual: 208 census tracts, 40% of the city)
- City #3 - Decrease of 20% or More: 308 census tracts, 59% of the city (2005 actual: 206 census tracts, 40% of the city)

## Scenario Assumptions:

1. No City #1 census tracts (1970-2005 definition) will decrease in income by 20% or more since 1970 to leave the group.
2. No City #3 census tracts (1970-2005 definition) will increase in income by 20% or more since 1970 to leave the group.
3. All City #2 census tracts that increased 5% to 20% in income 1970-2005 will reach the 20% threshold to join City #1.
4. All City #2 census tracts that decreased 5% to 20% in income 1970-2005 will reach the 20% threshold to join City #3.
5. All City #2 census tracts that increased or decreased less than 5% in income 1970-2005 will remain in City #2.

Note: Census Tract 2001 boundaries shown. Census Tracts with no income data for 1970 or 2005 are excluded from the analysis. There were a total of 527 census tracts in 2001.

Source: 1. Statistics Canada, Census 1971, 2006



Greater Toronto Urban Observatory  
[www.gtuo.ca](http://www.gtuo.ca) [www.NeighbourhoodChange.ca](http://www.NeighbourhoodChange.ca)