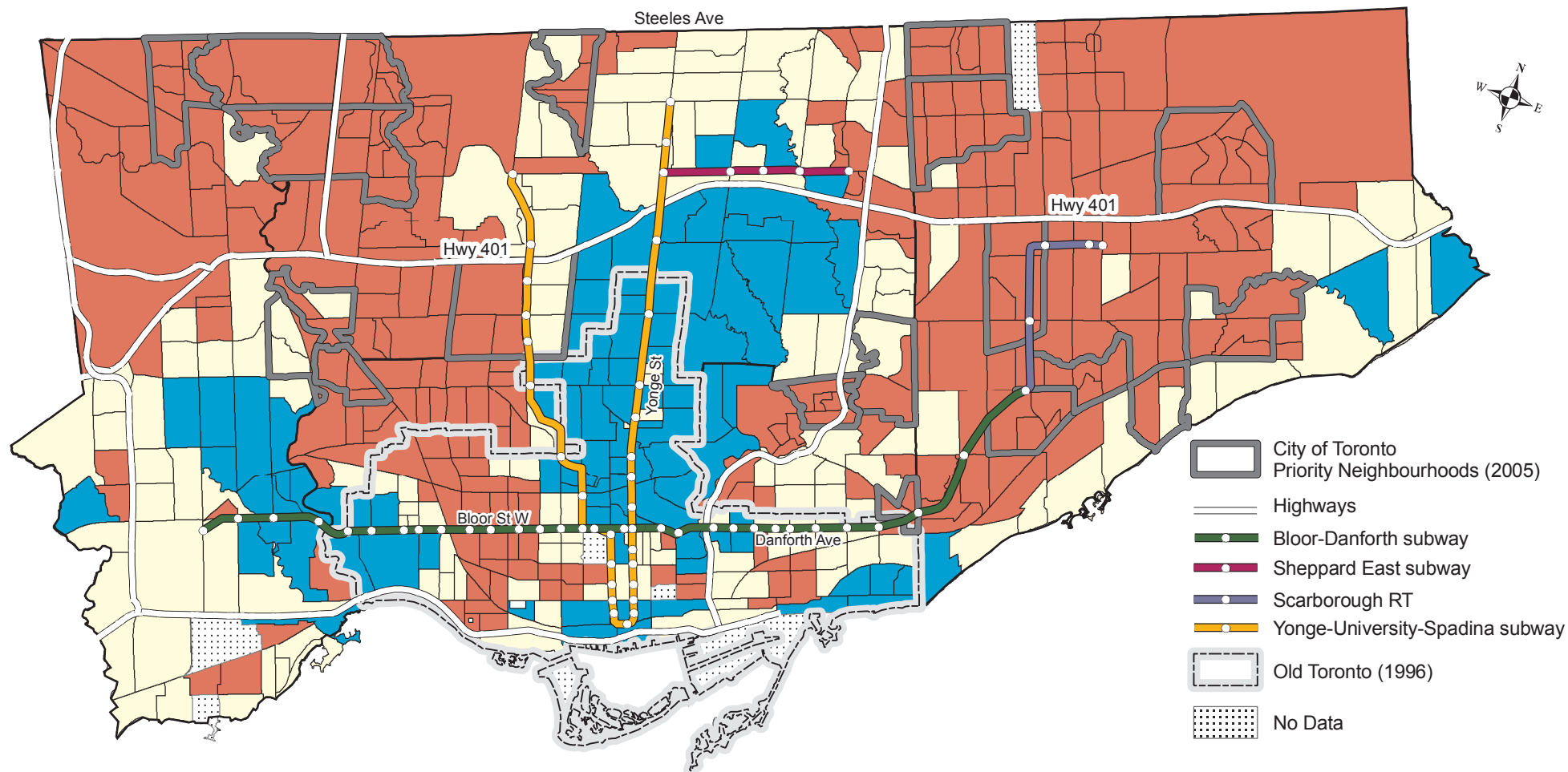


Average Individual Income, City of Toronto, 2005

Average Individual Income from all sources, 15 Years and Over, Census Tracts



5 2.5 0 5 Kilometers

Census Tract Average Individual Income compared to the Toronto CMA Average

- High - More than 20% Above
- Middle Income - 20% Below to 20% Above
- Low - More than 20% Below

Note: Census Tract 2006 boundaries shown.

Source: Statistics Canada, Census Profile Series 2006



Greater Toronto Urban Observatory
www.gtuo.ca www.NeighbourhoodChange.ca