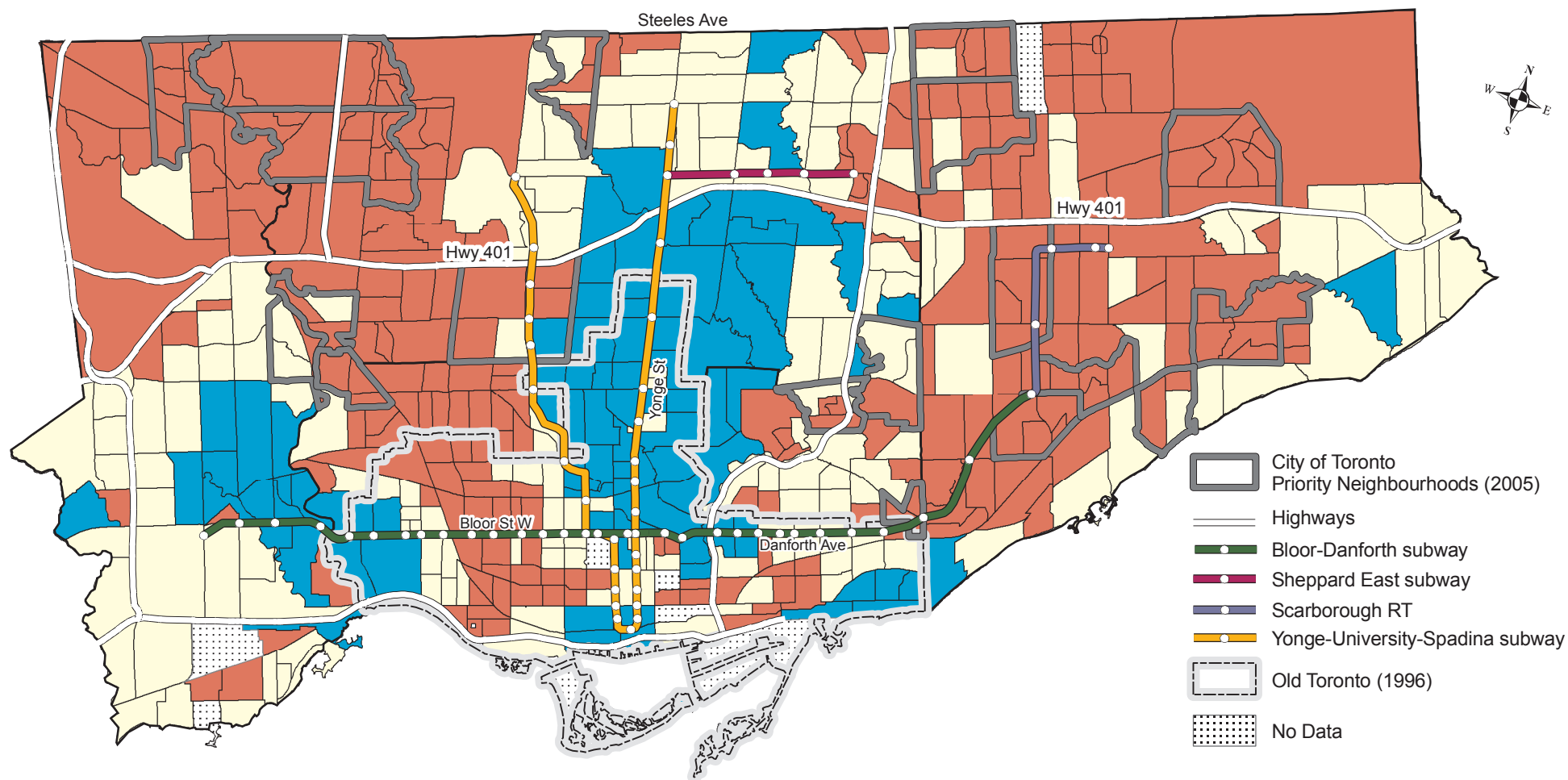


Average Individual Income, City of Toronto, 2000

Average Individual Income from all sources, 15 Years and Over, Census Tracts



5 2.5 0 5 Kilometers

Census Tract Average Individual Income compared to the Toronto CMA Average

- High - More than 20% Above
- Middle Income - 20% Below to 20% Above
- Low - More than 20% Below

Note: Census Tract 2001 boundaries shown. There were 527 Census Tracts in 2001.

Source: Statistics Canada,
Census 2001

Cities Centre
UNIVERSITY OF TORONTO

Greater Toronto Urban Observatory
www.gtuo.ca www.NeighbourhoodChange.ca