

Toronto's 13 Priority Areas

Research Methodology

**Tri-Level Committee
on Gun/Violence
Staff Work Group**

January 25, 2006



The Presentation:

1) Creation of the Priority Areas

- 140 Toronto Neighbourhoods
- Strong Neighbourhoods Task Force (STNF)
- Additional factors in determining the Priority Areas
- resulting “**13 Priority Areas**”

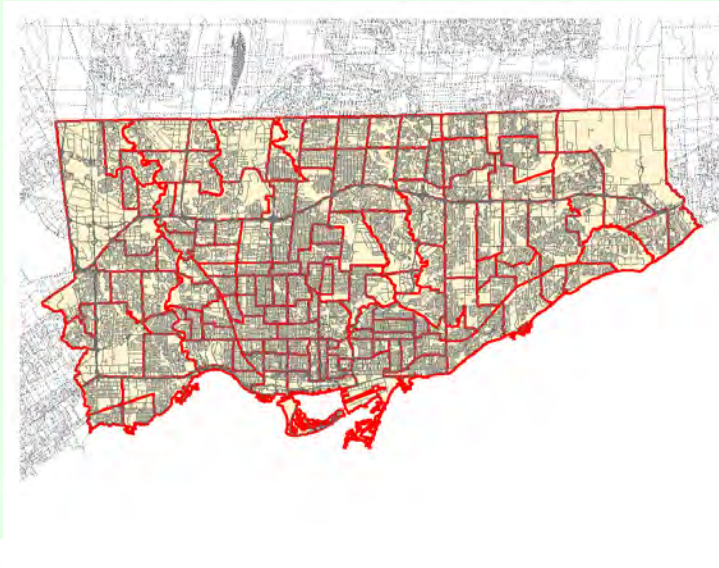
2) Demographic & Service Scan

- Jane-Finch example

CREATION OF THE PRIORITY AREAS

140 Toronto Neighbourhoods

- * Developed by the City as another way of reporting statistics
- * 140 in total
- * Minimum population of 7,000-10,000 people
- * Not “administrative” in nature
- * Defined by grouping income characteristics in combination with man-made and natural features
- * Refined through consultations
- * Now in use across City service areas and other organizations



Strong Neighbourhoods Task Force

- Final SNTF report based on six background research reports:
 1. ***Why Neighbourhoods Matter: Implications for Policy & Practice***
Neighbourhood planning approaches and international examples.
 2. ***The Role of Community Infrastructure***
Importance and components of social infrastructure.
 3. ***Measuring Neighbourhood Vitality***
Exploration and recommendations on neighbourhood socio-economic indicators.
 4. ***Neighbourhood Social Infrastructure in Toronto***
Detailed service and demographic analysis.
 5. ***Putting Theory to Practice***
Testing these research findings in 3 Toronto communities.
 6. ***Multi-partner Funding for Neighbourhood Revitalization in Toronto***
History, challenges & successes of neighbourhood investment strategies.

Web Resources:

<http://www.toronto.ca/demographics/sntf.htm>

http://action.web.ca/home/uwgt-sn/documents.shtml?AA_EX_Session=2b8bf85bdd47bd5a13dc0fda806bee99

SNTF Research Report 4: Neighbourhood Social Infrastructure in Toronto

- This research report builds on the findings of previous research background reports #1, #2, and #3.
- Specifically analyses proximity of community infrastructure to socio-economic need at a neighbourhood level.
- Types of services analysed
 - General services for a broad pop'n:**
 1. Recreation & Community Centres
 2. Libraries
 3. Schools
 4. Community Health Centres & Hospitals
 - Services for specific needs:**
 5. Children's services
 6. Youth services
 7. Senior's services
 8. Services for new immigrants
 9. Employment services
 10. Community Food programs
 11. Food banks

SNTF Research Report 4: Neighbourhood Social Infrastructure in Toronto – cont'd

Methodology:

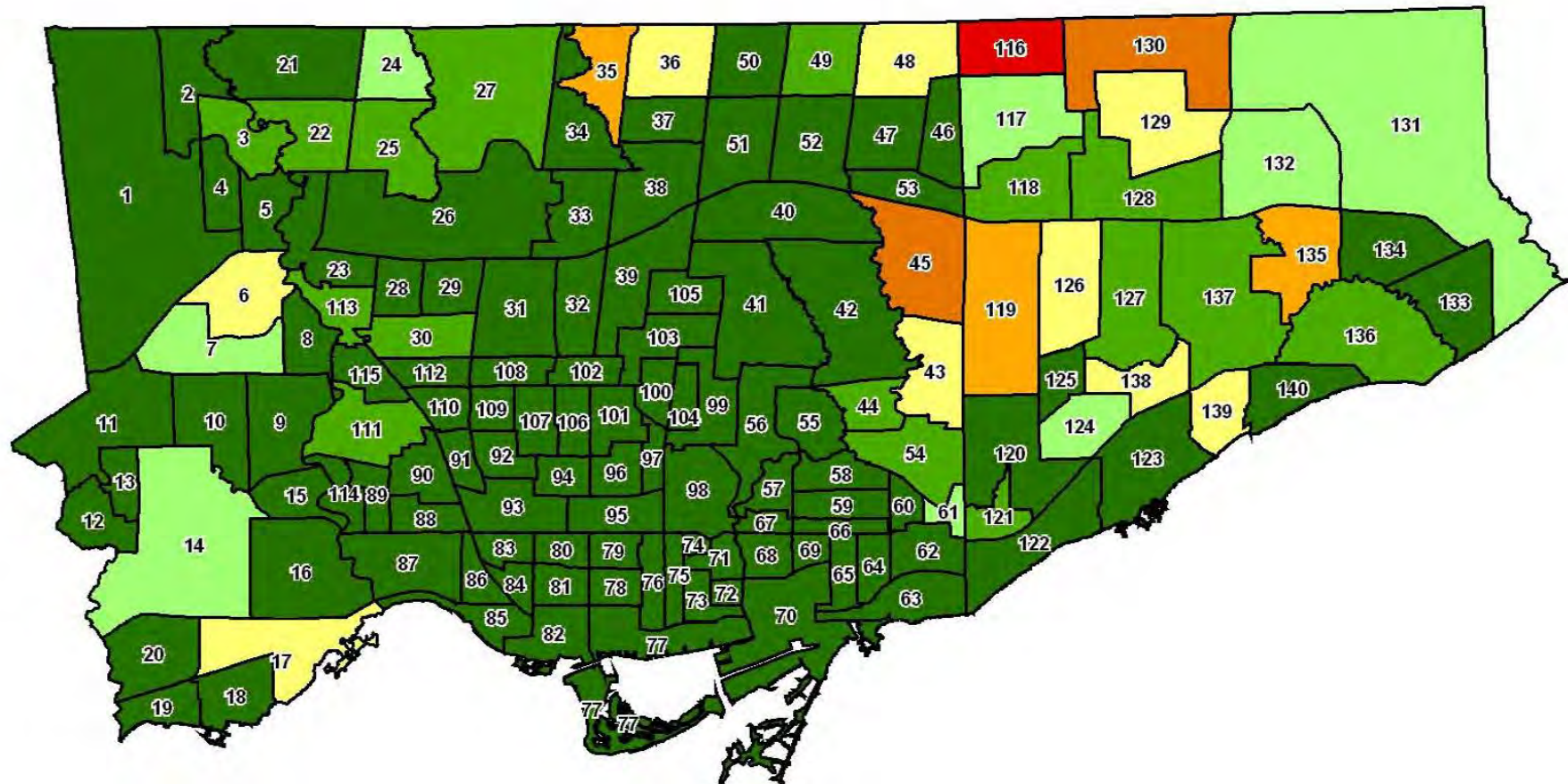
- Use GIS buffering techniques to compare each **service** location to block-level **population** distribution, by neighbourhood:
 - **General services** x total population
 - **Children's services** x children age 0-14
 - **Youth services** x youth age 15-24
 - **Senior's services** x seniors age 65+
 - **Immigrant services** x recent immigrants
 - **Employment services** x unemployed persons
 - **Food programs** x total population
 - **Food banks** x population below low-income cut-off
- Proxy for service coverage is 1km “walking distance”

SNTF Research Report 4: Neighbourhood Social Infrastructure in Toronto – cont'd

- Service coverage ranges
 - **Very poor coverage:** (20% or fewer residents are within walking distance of service)
 - **Poor coverage:** (21-40%)
 - **Moderate Coverage:** (41-60%)
 - **Good Coverage:** (61-80%)
 - **Very Good coverage:** (81%+)
- Population (“needs”) coverage ranges
 - **Much higher:** Pop’n group is 50% or higher than city average
 - **Higher:** 20-49% higher than city average
 - **Similar:** 20% +/- the city average
 - **Lower:** 20%-49% lower than city average
 - **Much Lower:** 50% or more lower than city average
- FOCUS ON: Neighbourhoods with **POOR COVERAGE** and **HIGH NEED**

- Map on next slide summarizes the framework visually, by counting the number of times a neighbourhood has **poor coverage** (less than 40% of the neighbourhood's population is within walking distance of services), but also has **higher need** (neighbourhood population group is 20% or higher than city average).

Poorer Coverage and Higher Need



Legend

Number of Poorer Access Services

	N/A		3 Services
	1 Service		4 Services
	2 Services		5 Services
			6 Services

Notes: Numbers on map refer to neighbourhood #, not coverage. Refer to neighbourhood map in the Appendix for proper names. There is no data for the 805 area, and this may affect coverage ratings in border areas.



0 0.5 1 2 3 4 Km

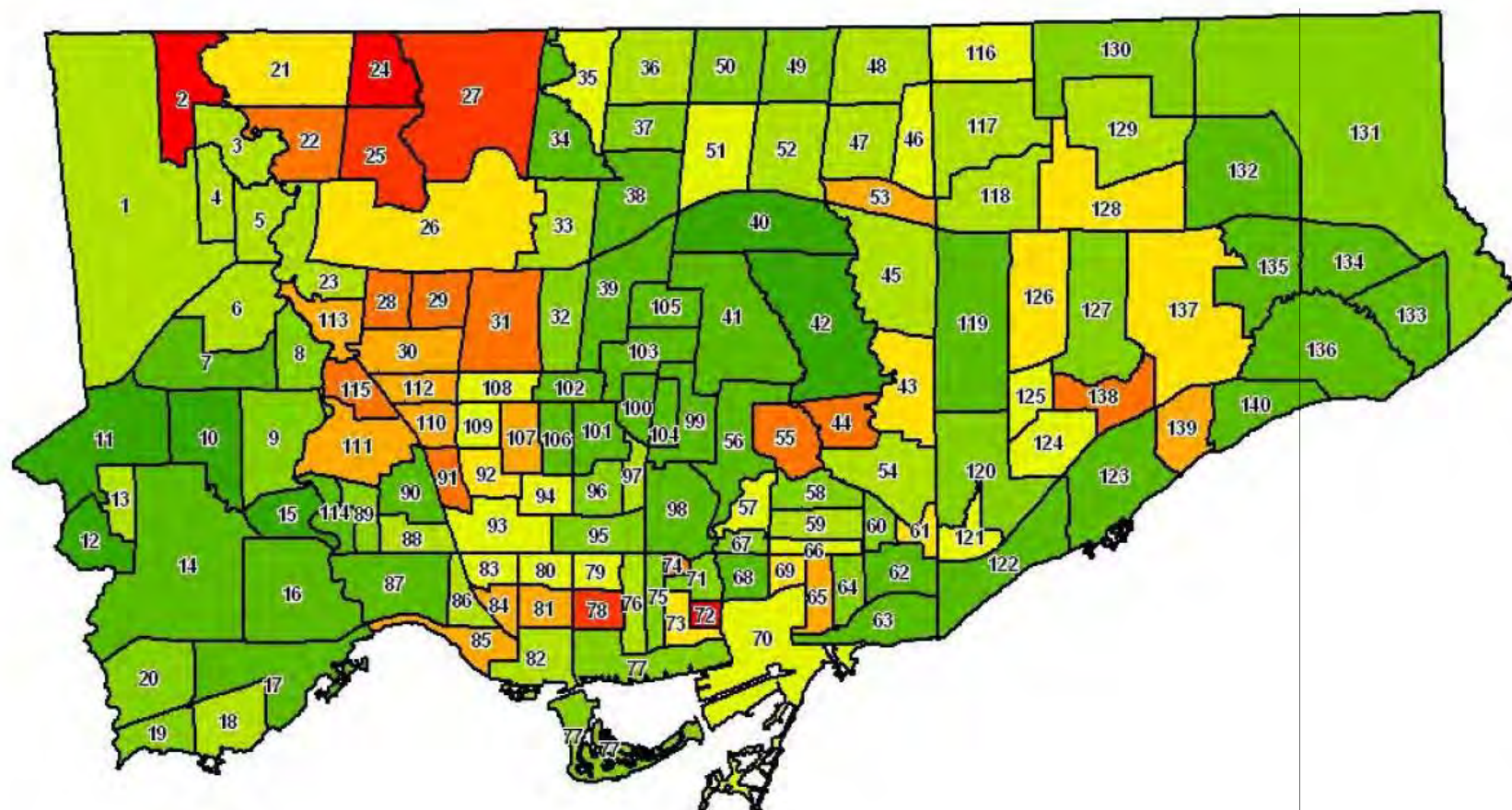


Source: City of Toronto, Social Policy Analysis & Research
Copyright 2005 City of Toronto. All Rights Reserved.
Date of Publication: April 2005
Contact: spar@toronto.ca

Notes: This is part of the Research Strategy of the Strong Neighbourhoods Task Force.

- Now compare this to 11 socio-economic indicators (as identified in background research report #3):
 1. median household income
 2. % pop'n spending 30%+ on shelter costs
 3. % pop'n age 25+ unemployed
 4. % students passing High School Literacy test
 5. % pop'n with college or university qualifications
 6. % pop'n attaining less than grade 9 education
 7. % dwellings requiring major repair
 8. # low birth weight babies per 1000 live births
 9. % pop'n without English or French language skills
 10. % pop'n that are recent immigrants
 11. % pop'n by mobility status 1 year ago
- Map on next slide shows the number of times each indicator was 20% worse than city average.

Neighbourhoods Facing Significant Challenges



Legend

Measures of Challenge:

(by neighbourhood)



Notes:
Refer to neighbourhood map in
the Appendix for proper names.



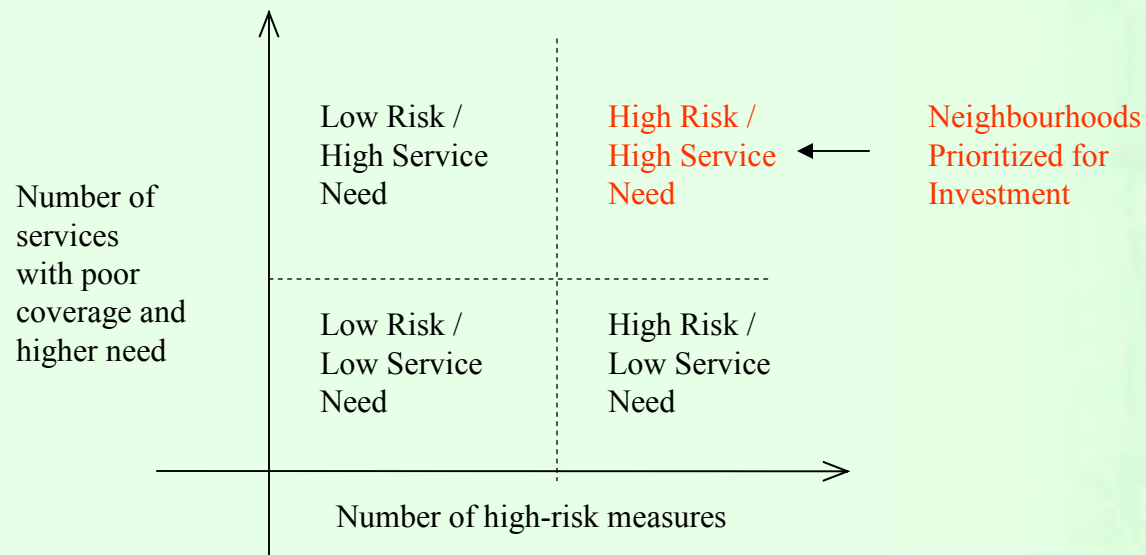
0 0.5 1 2 3 4 Km



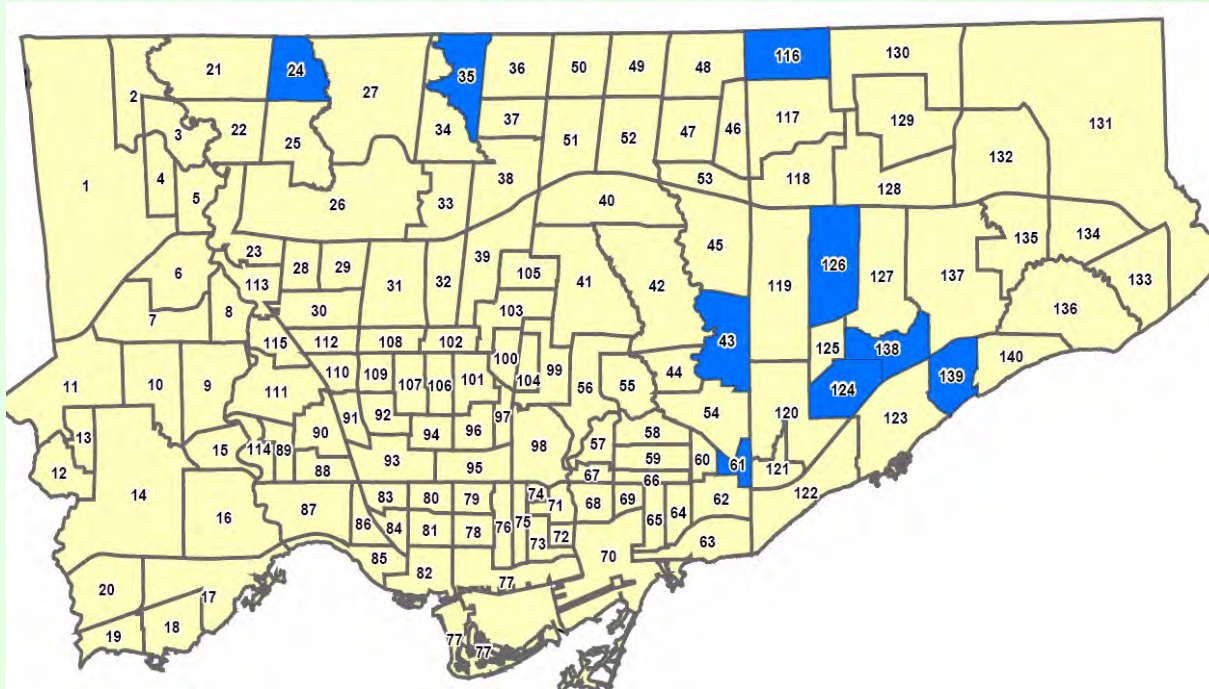
Source: City of Toronto, Social Policy Analysis & Research;
GHK Consultants Report #3
Copyright © 2005 City of Toronto. All Rights Reserved.
Date of Publication: May 2005
Contact: sparr@toronto.ca

Notes: This is part of the Research Strategy of the Strong
Neighbourhoods Task Force.

NEIGHBOURHOOD INVESTMENT FRAMEWORK:

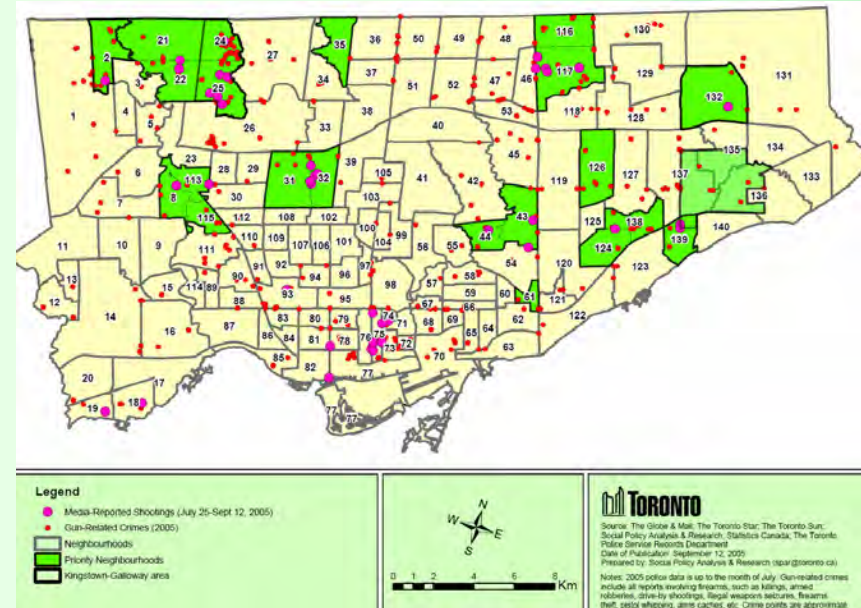
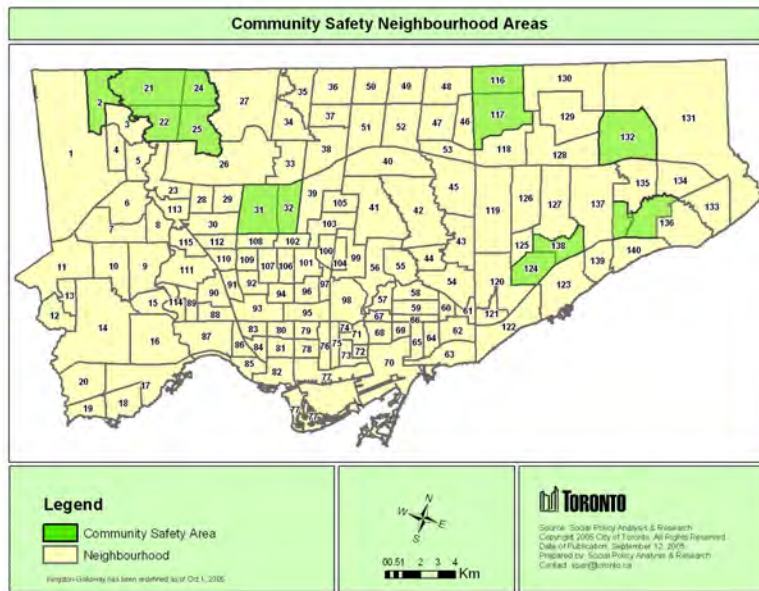


- Result: Nine priority neighbourhoods in the final Strong Neighbourhoods Task Force Report.



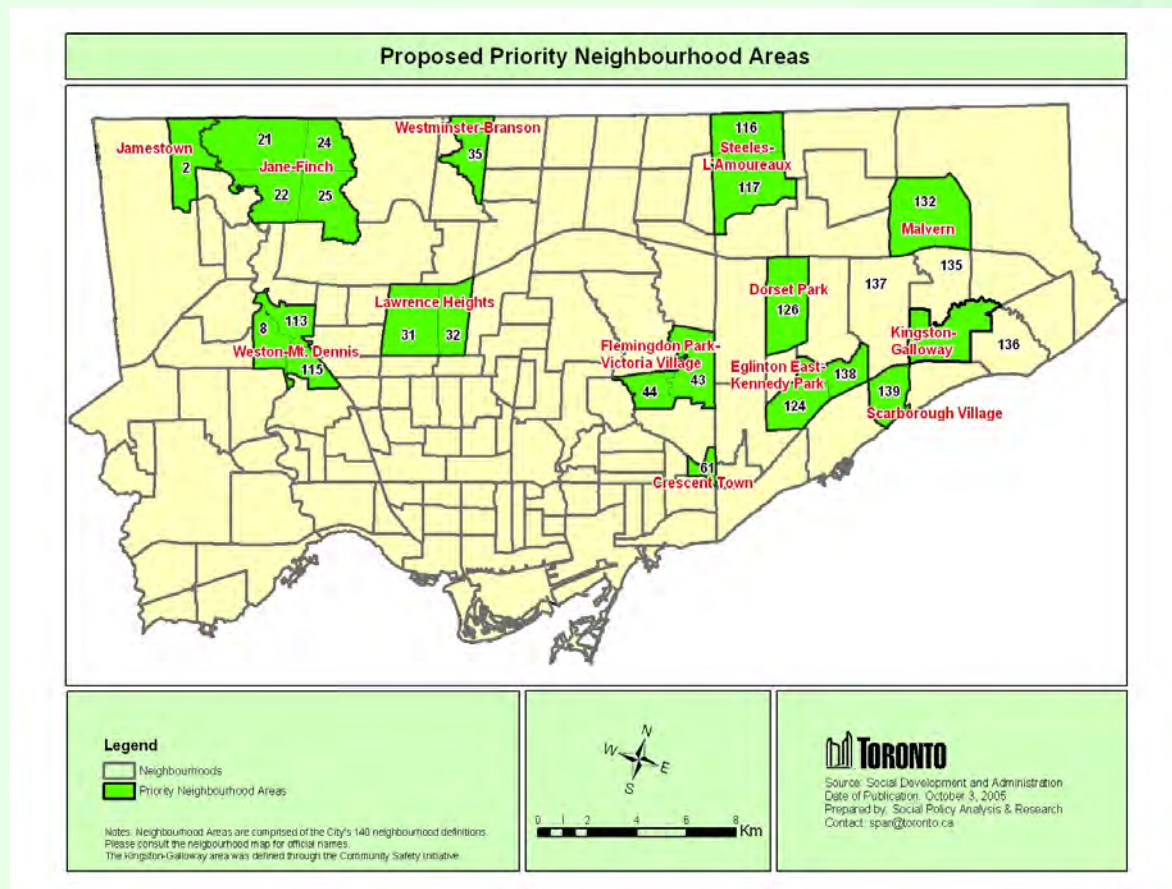
ADDITIONAL FACTORS IN DETERMINING THE PRIORITY AREAS

- Also factored in are the Community Safety Plan, and neighbourhoods that experiencing violence.



THE RESULTING “13 PRIORITY NEIGHBOUHOODS”

- These neighbourhoods are now combined where geographically appropriate into “**13 Priority Areas**”.



DEMOGRAPHIC & SERVICE SCAN

Example: Jane-Finch

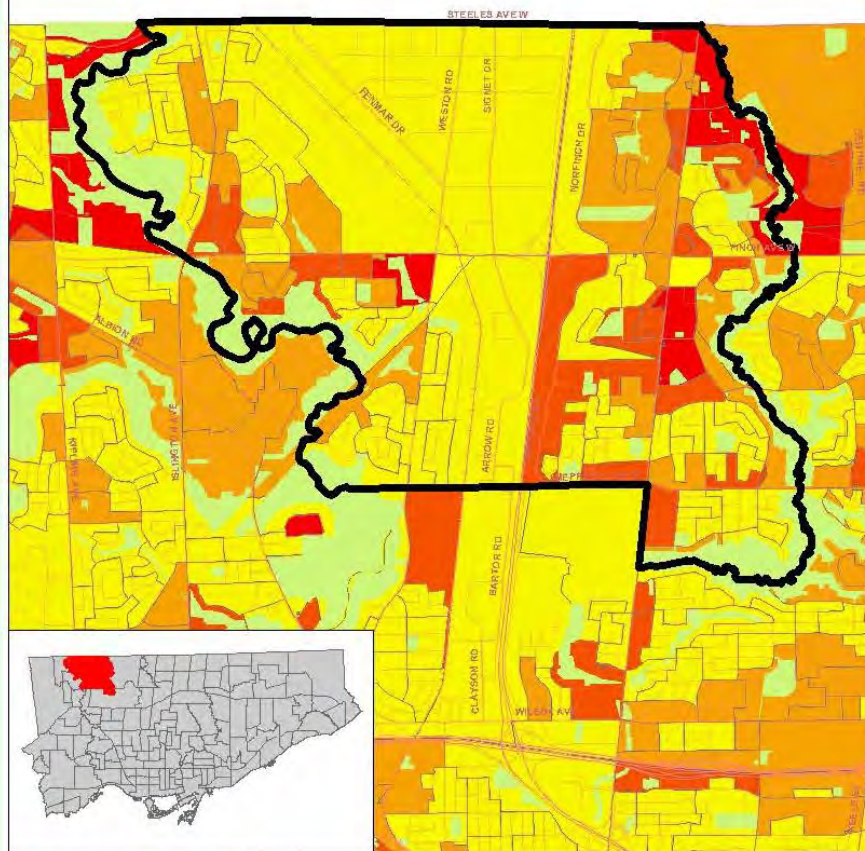
Demographic & Service Scan

- Demographic & Service scans are derived from CT and DA level census data.
- Service listings are from both city and community sources (ex. 211 Toronto), and are being updated constantly
- Some demographic highlights:
 - Youth comprise 14% of the pop'n (vs. 12% citywide)
 - 28% of all families are single-led (vs. 20% citywide)
 - Immigrants make up 62% of the pop'n (vs. 43% citywide)
 - Youth unemployment & % low income, higher than city average
 - Average income: \$48,650 (vs. \$69,125 citywide)

Demographic & Service Scan

- Some initial service scan highlights:
 - Well-established network of churches and other faith institutions
 - Social Housing mostly located to the east of Hwy400
 - Few employment services (given higher area of unemployment)
 - Few immigrant settlement services (given high number of immigrants)
 - With the exception of childcare and some health agencies, not all agencies provide services in languages other than English
 - Most agencies (with exception of health services), provide services only during the work week

Population 15+ Below Low Income Cutoff in Jane-Finch Area



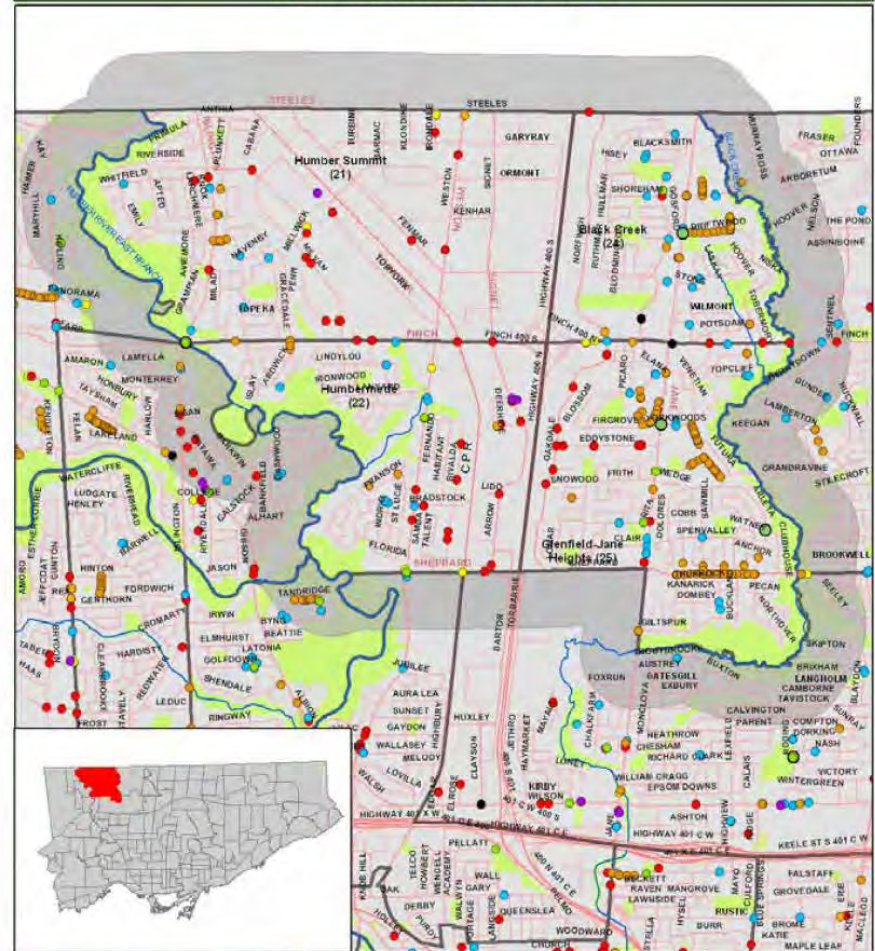
Low Income Population 15+

0 - 125
126 - 330
331 - 690
691 - 2370
Parks



Toronto
Source: Statistics Canada 2001 Census.
Copyright 2006 City of Toronto. All rights reserved.
Date of Publication: January 2008
Created by:
Social Policy Analysis & Research
Contact: spar@toronto.ca

Human Services in Jane-Finch Area



- Community Resources
- Diversity & Ethnicity
- Employment & Training
- Education & Child Development
- Health
- Housing
- Recreation
- Streets
- Railways
- Parks
- 0.5 km buffer
- Neighbourhoods



Toronto
Source: Parks, Forestry & Recreation, Public Health, Toronto Public Library, TCHC, Shelter & Housing, Community Care Access Centre, TDSB, TCOSS, 211 Toronto.
Copyright 2006 City of Toronto. All rights reserved.
Date of Publication: July 2006
Created by: Social Policy Analysis & Research
Contact: spar@toronto.ca

Demographic & Service Scan (SAMPLE LISTING)

HEALTH			
Caritas Project Community Against Drugs	15 Millwick Dr	M9L 1Y4	(416) 748-9988
Humber River Regional Hospital. Finch Avenue Site	2111 Finch Ave W	M3N 1N1	(416) 744-2500
Humber River Regional Hospital. Finch Avenue Site. Emergency Department	2111 Finch Ave W	M3N 1N1	(416) 747-3833
Mens Sana, Families for Mental Health	87 Irondale Dr	M9L 2S6	(416) 747-6018
North Toronto After Hours Children's Medical Clinic (Hwy 400-Finch Ave W)	2100 Finch Ave W, Ste 202	M3N 2Z9	(416) 665-8515
Philip Aziz Centre	155 Deerhide Cres	M9M 2Z2	(416) 363-9196
St Bernadette's Family Resource Centre. St Jude's Academy of the Arts	3100 Weston Rd	M9M 2S7	(416) 740-7187
Youth Clinical Services	3451A Weston Rd (at Finch	M9M2V9	
IMMIGRANT AND ETHNO-SPECIFIC SERVICES			
Afghan Association of Ontario	29 Pemican Court, Unit 6	M9M 2Z3	(416) 744-9289
African Canadian Seniors' Day Centre	196 Toryork Dr	M9L 1X6	(416) 631-9671
Jamaican Canadian Association	995 Arrow Rd	M9M 2Z5	(416) 746-5772
Jamaican Canadian Association. Caribbean Youth and Family Services	995 Arrow Rd	M9M 2Z5	(416) 746-5772
PLACES OF WORSHIP			
Abiezer Penetecostal	94 Milvan Dr		4167453579
African Community Church	7 Penn Dr		
Agape Ministeries	555 Oakdale Rd		
All Nations Full Gospel	4401 Steeles Ave W		4166659964
Apostles Revelation Society	266 Eddystone Ave		

Conclusion

- Current work now involving detailed demographic and service scan for each of the 13 priority areas.
- Initial set (version 1.1 January 2006) has been completed. These profiles will be modified and added to, on an on-going basis to provide another layer of research material for service planning purposes.

For more information contact:

Harvey Low

City of Toronto
Social Development, Finance and Administration
Social Policy, Analysis and Research

Telephone: 416-392-8660

Fax: 416-392-4976

Email: hlow@toronto.ca

